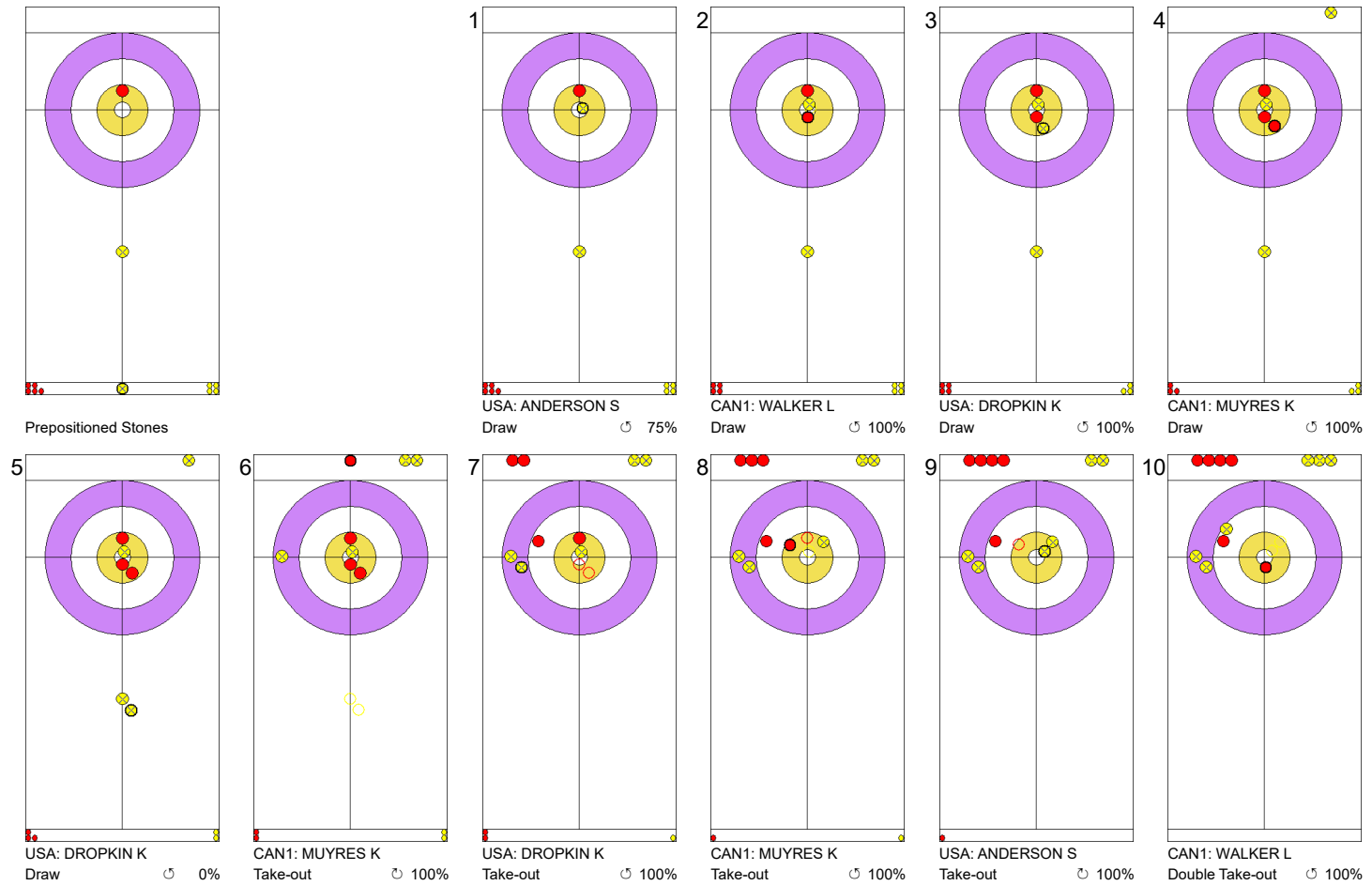


Game - Shot by Shot

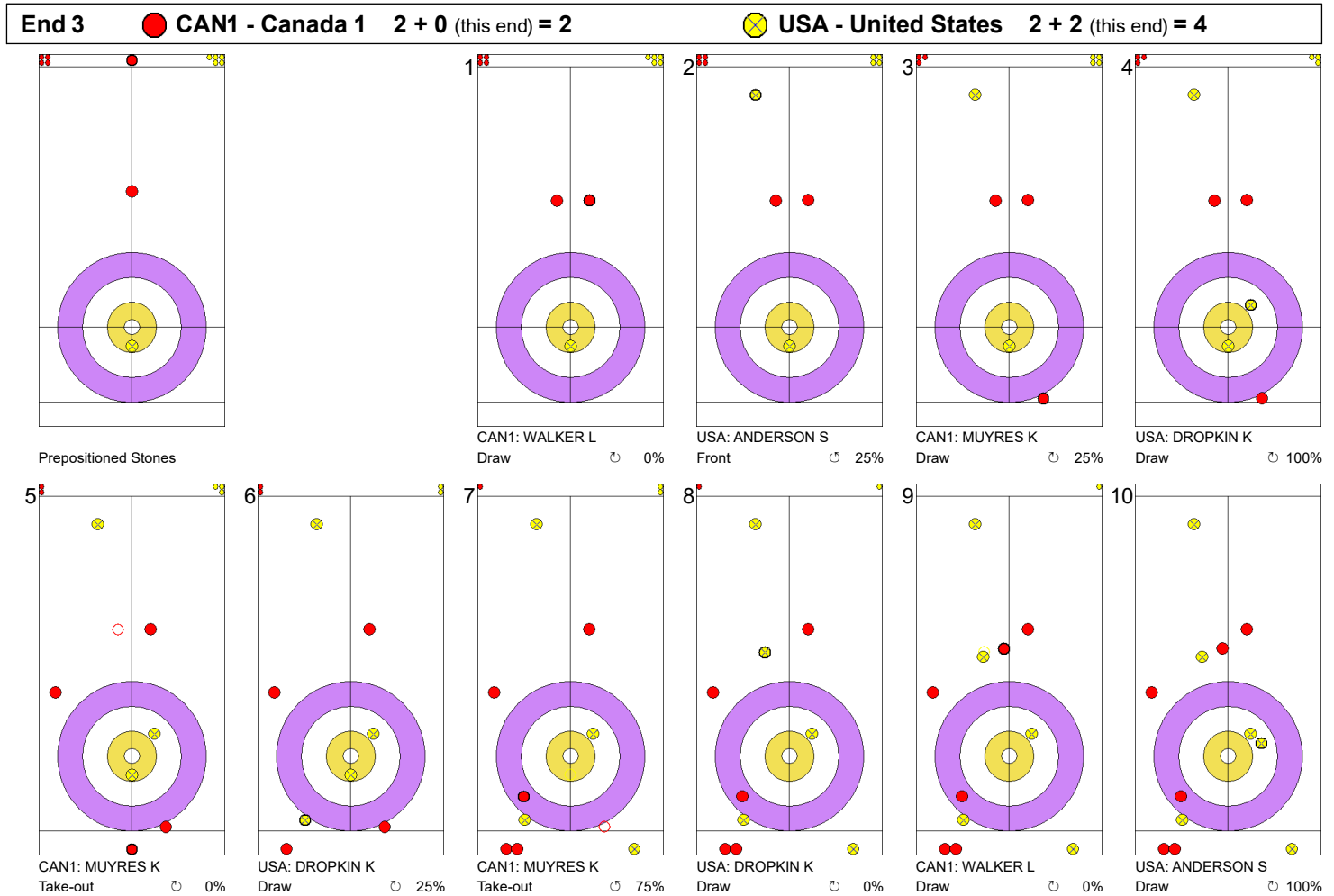
End 2 ● CAN1 - Canada 1 0 + 2 (this end) = 2 ⊗ USA - United States 2 + 0 (this end) = 2

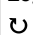



Legend:
↻ Clockwise ↻ Counter-clockwise - Not considered

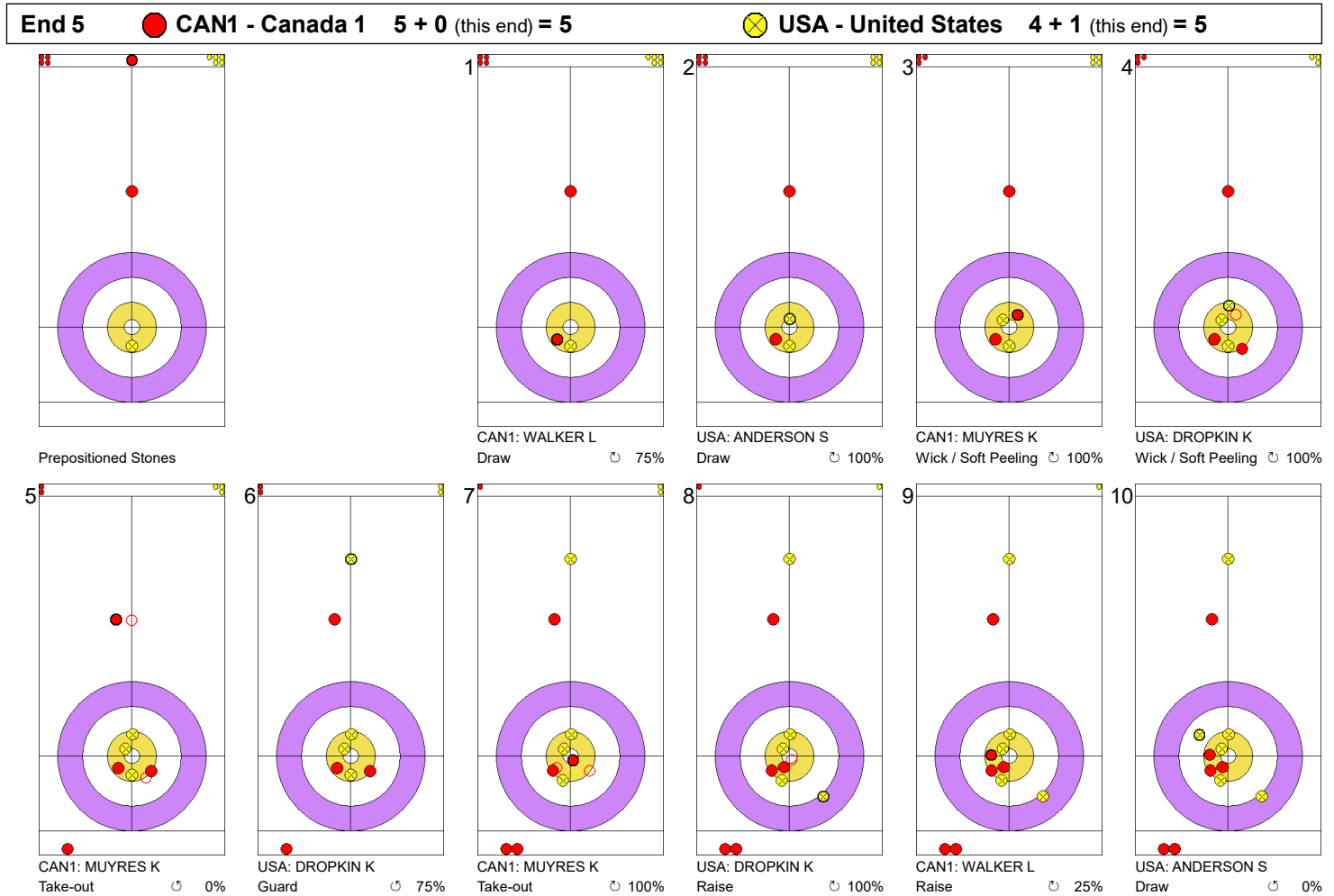




Game - Shot by Shot



Legend:
 Clockwise
  Counter-clockwise
 - Not considered

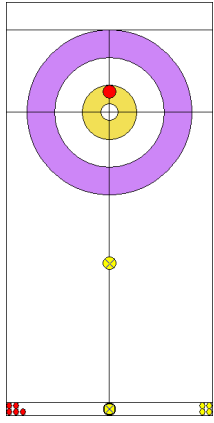
Game - Shot by Shot



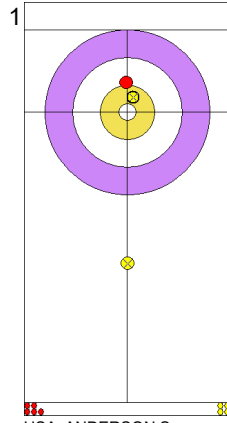
Legend:
 Clockwise
  Counter-clockwise
 - Not considered

Game - Shot by Shot

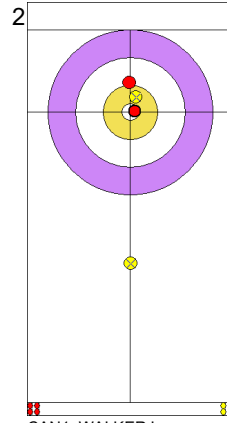
End 6 ● CAN1 - Canada 1 5 + 0 (this end) = 5 ● USA - United States 5 + 2 (this end) = 7



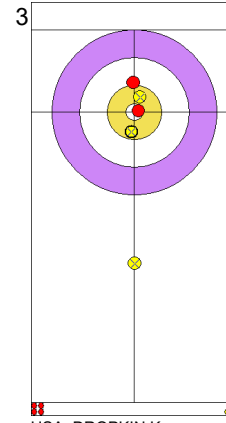
Prepositioned Stones



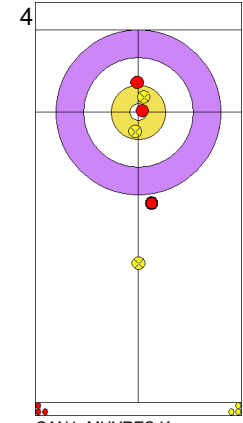
USA: ANDERSON S
Draw ⤵ 75%



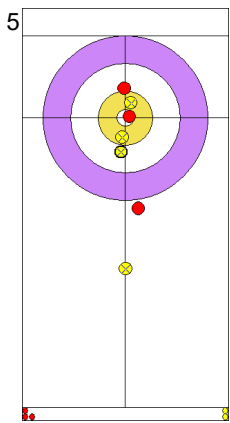
CAN1: WALKER L
Draw ⤵ 100%



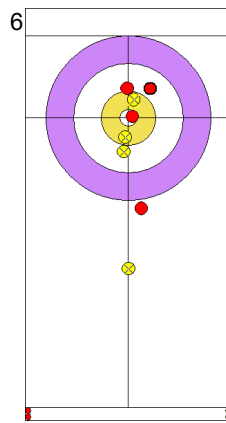
USA: DROPKIN K
Draw ⤵ 100%



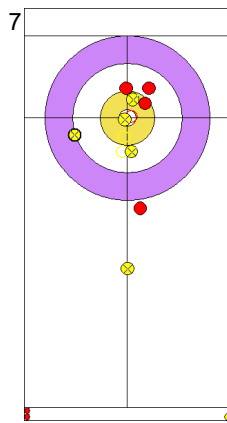
CAN1: MUYRES K
Draw ⤵ 25%



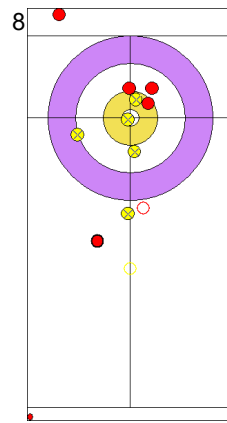
USA: DROPKIN K
Draw ⤵ 100%



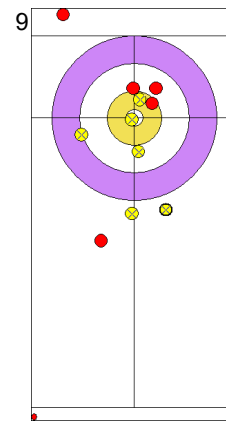
CAN1: MUYRES K
Wick / Soft Peeling ⤵ 75%



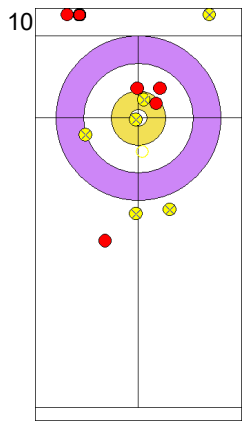
USA: DROPKIN K
Promotion Take-out ⤵ 100%



CAN1: MUYRES K
Take-out ⤵ 0%



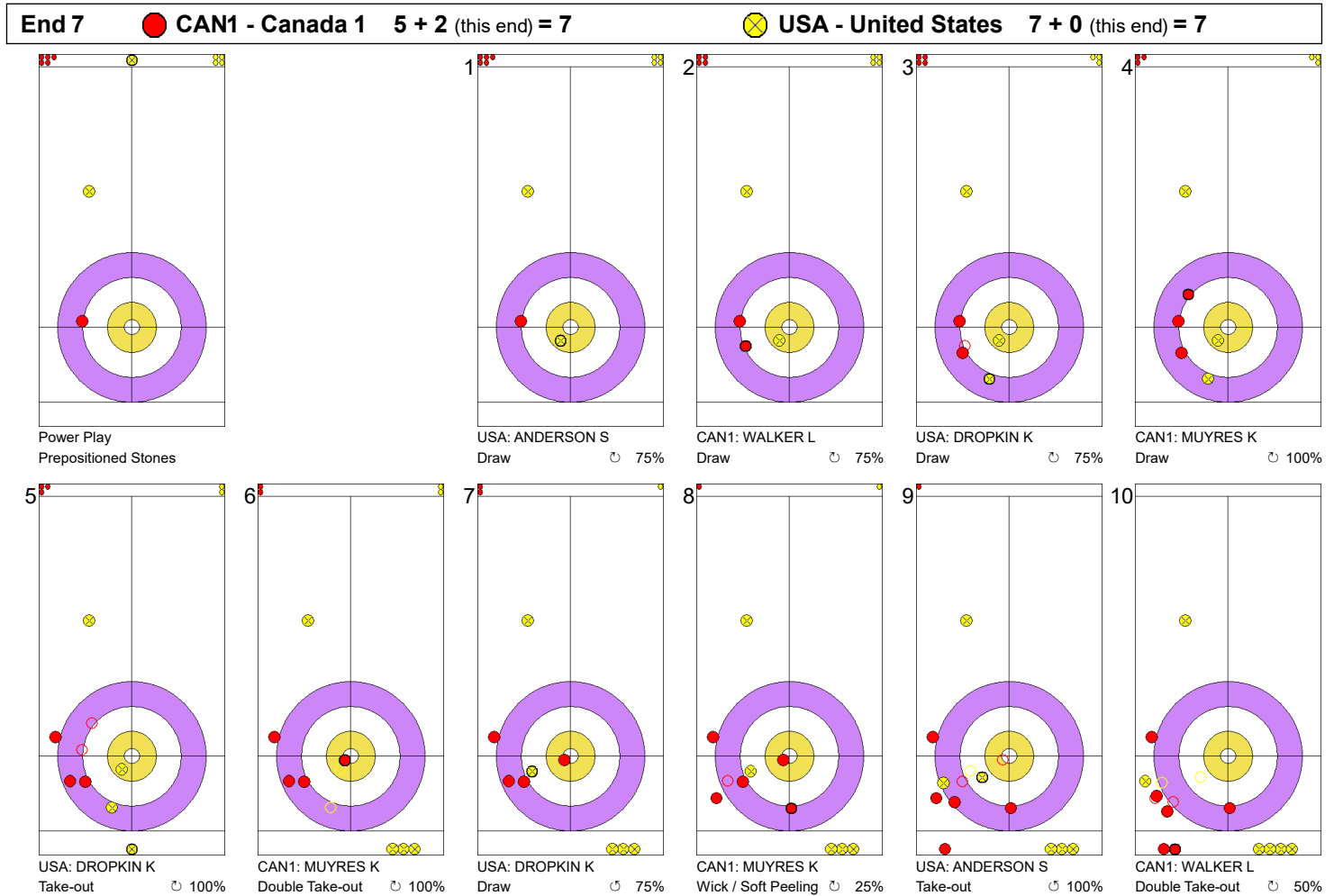
USA: ANDERSON S
Guard ⤵ 50%





CAN1: WALKER L
Double Take-out ⤵ 0%

Legend:
 ⤵ Clockwise ⤴ Counter-clockwise - Not considered

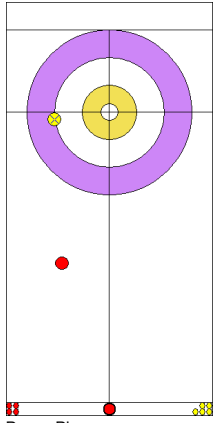
Game - Shot by Shot



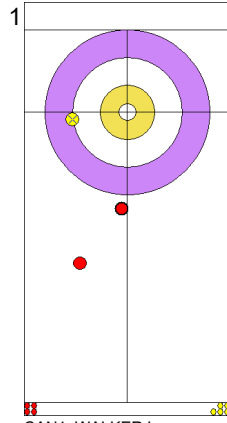
Legend:
 Clockwise
  Counter-clockwise
 - Not considered

Game - Shot by Shot

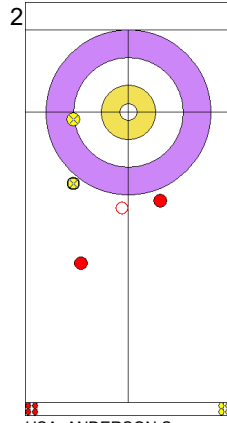
End 8 **CAN1 - Canada 1 7 + 0 (this end) = 7** **USA - United States 7 + 1 (this end) = 8**



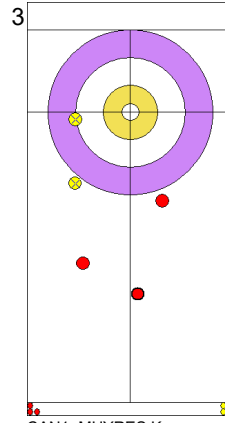
Power Play
Prepositioned Stones



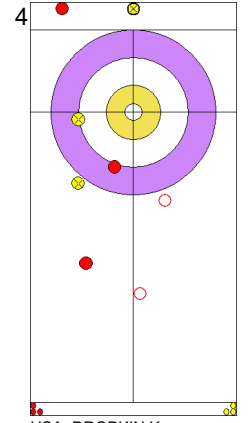
CAN1: WALKER L
Front



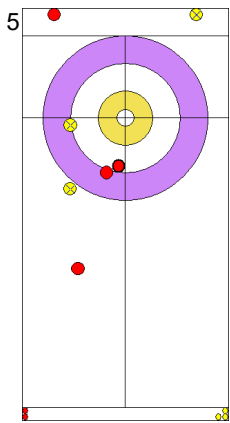
USA: ANDERSON S
Wick / Soft Peeling



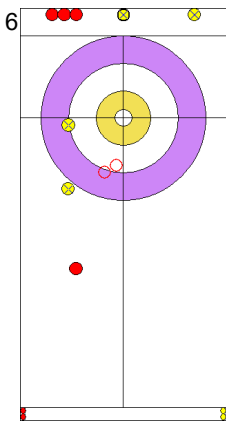
CAN1: MUYRES K
Front



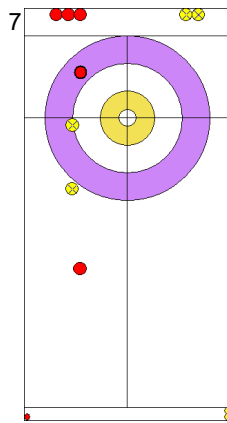
USA: DROPKIN K
Take-out



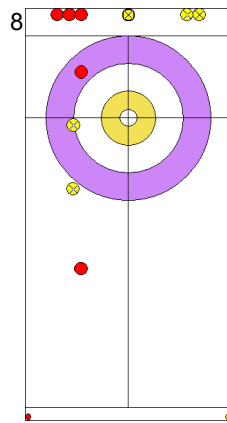
CAN1: MUYRES K
Draw



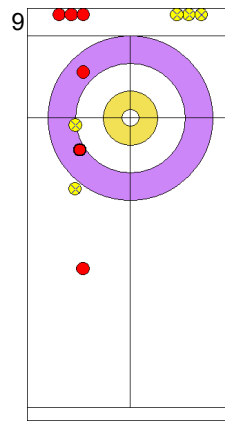
USA: DROPKIN K
Double Take-out



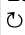

CAN1: MUYRES K
Draw



USA: DROPKIN K
Through



CAN1: WALKER L
Draw

Legend:
 Clockwise
  Counter-clockwise
 - Not considered